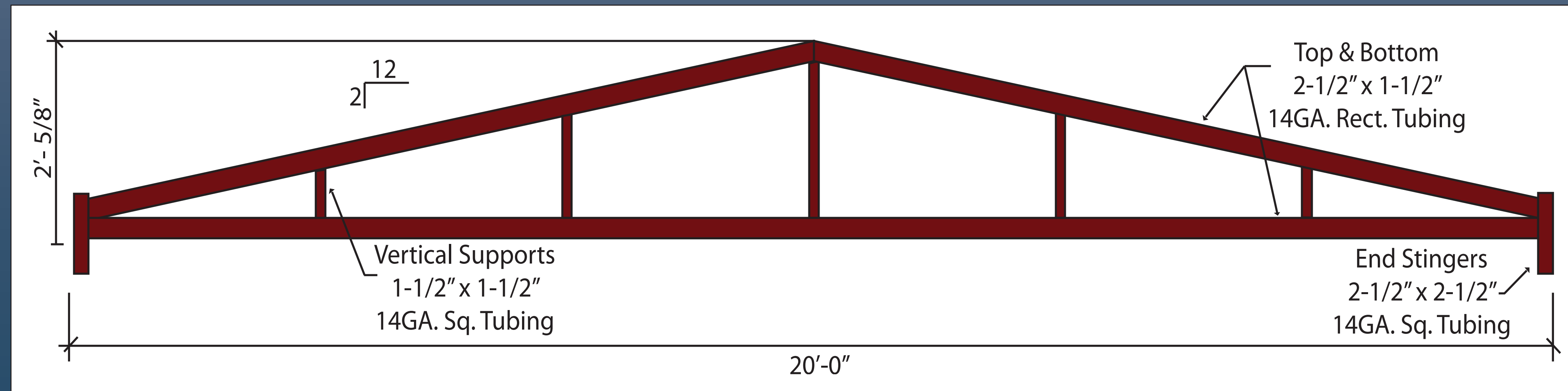


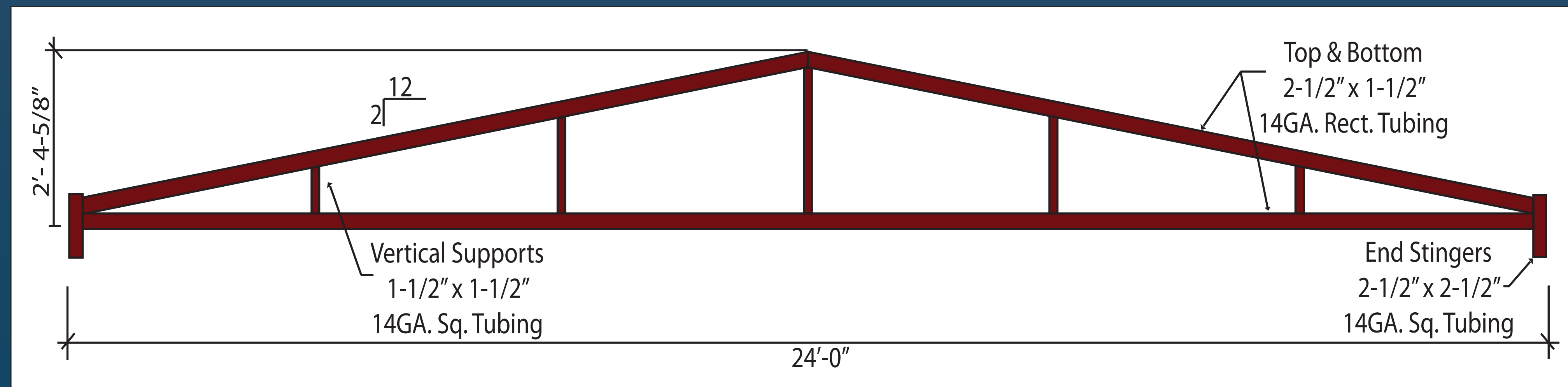
# M Metal Mart

## Red Oxide Building Trusses

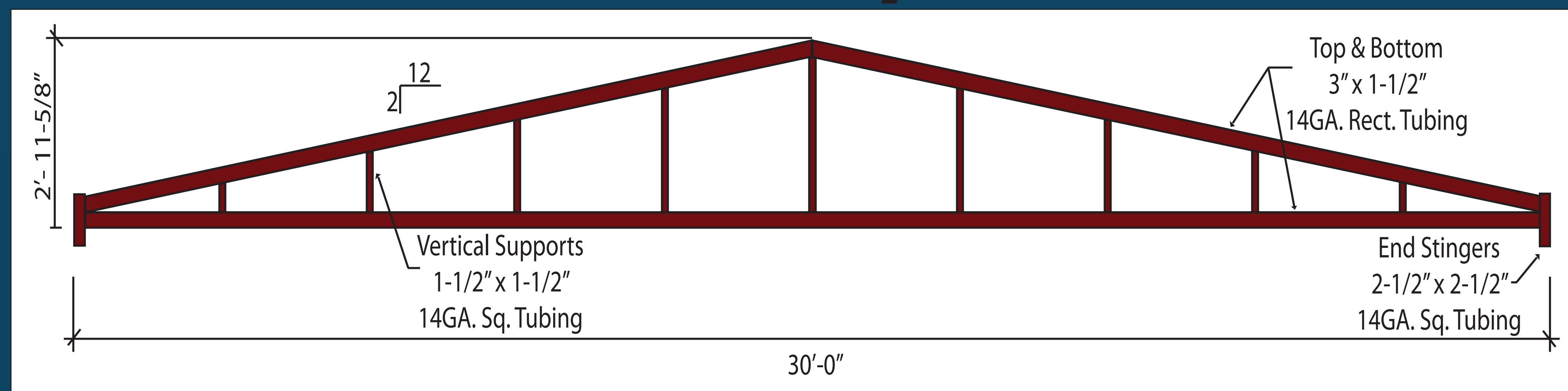
### 20' Truss - 2/12 Pitch



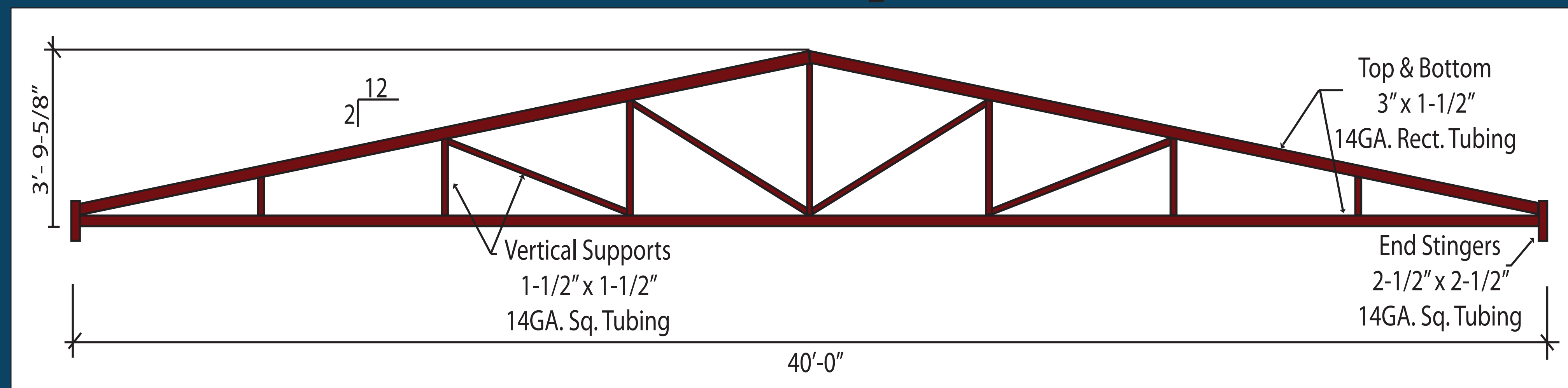
### 24' Truss - 2/12 Pitch



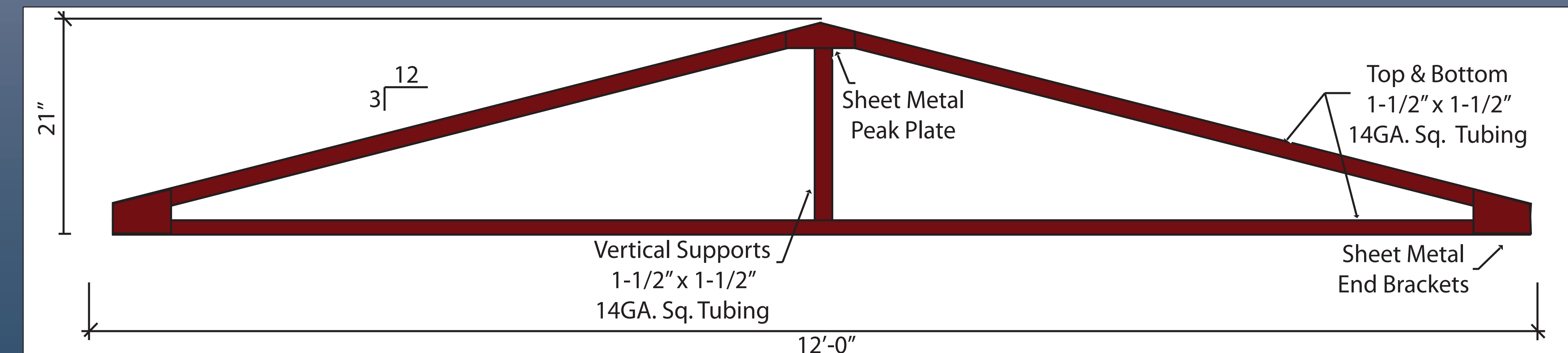
### 30' Truss - 2/12 Pitch



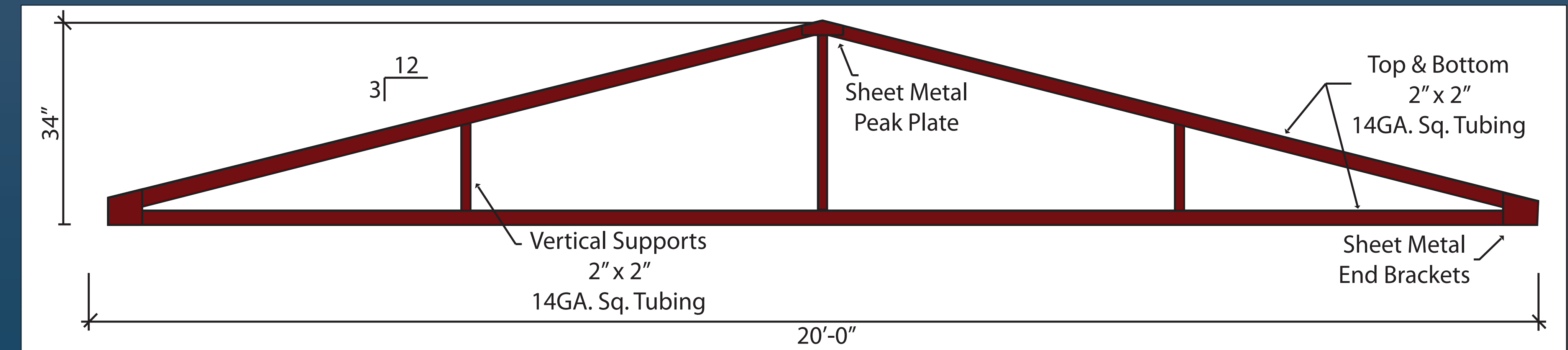
### 40' Truss - 2/12 Pitch



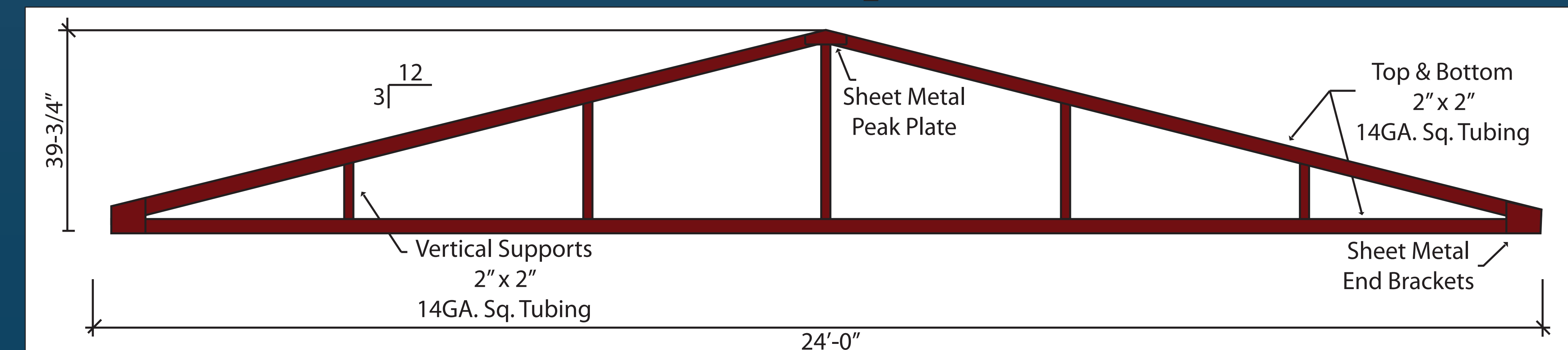
### 12' Truss - 3/12 Pitch



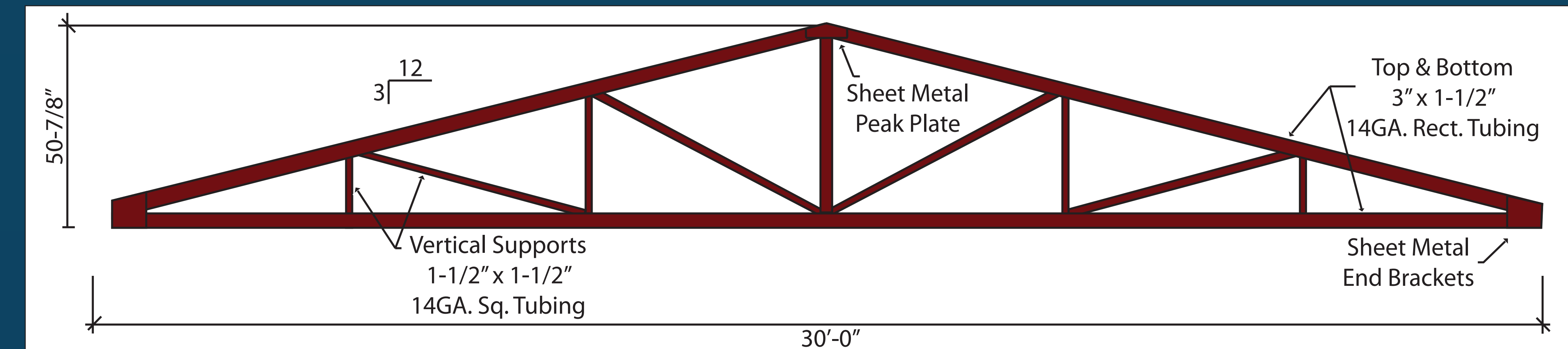
### 20' Truss - 3/12 Pitch



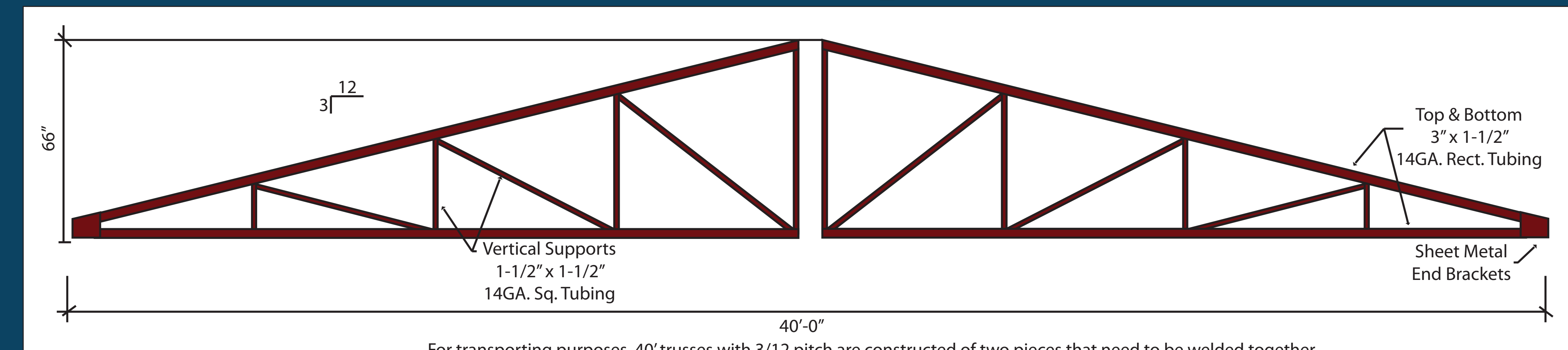
### 24' Truss - 3/12 Pitch



### 30' Truss - 3/12 Pitch



### 40' Truss - 3/12 Pitch



For transporting purposes, 40' trusses with 3/12 pitch are constructed of two pieces that need to be welded together.