



METAL ROOFING:

RESIDENTIAL GUIDE

&

BASIC KNOWLEDGE



Welcome to Metal Mart!

Metal Mart offers the widest variety of metal roofing components of any retailer in the country. Whether you are looking for the highest quality or the lowest price, Metal Mart can service all your metal roofing needs. We have hundreds of years combined experience, and our team members are ready to help you understand your wants and needs to guide you from concept to completion. From our humble beginnings as a single store with dirt floors, to our current 45 locations across 5 states, we still believe in providing the highest quality materials, excellent customer service, and affordable pricing.

We appreciate your business and look forward to helping you with all your metal roofing needs!



TABLE OF CONTENTS:

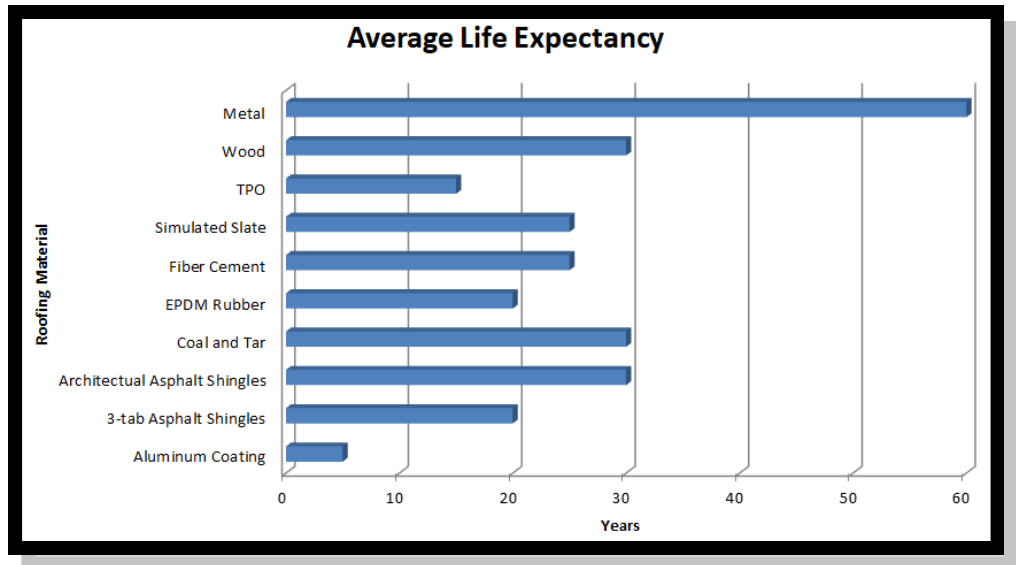
Why choose metal? Metal Roofing Advantages	3
What is a substrate? Underneath the Obvious	6
What is a coating? Aside From the Obvious	7
Warranties The Honest Truth	9
Panel Options What's the difference?	12
Metal Roofing FAQs Separating Fact & Fiction	14
The Metal Mart Difference A Step Above	16
Metal Mart Metal Roof Quote Request Form	17
Metal Mart Locations	18

Why choose metal?

Metal Roofing Advantages

Longevity & Durability

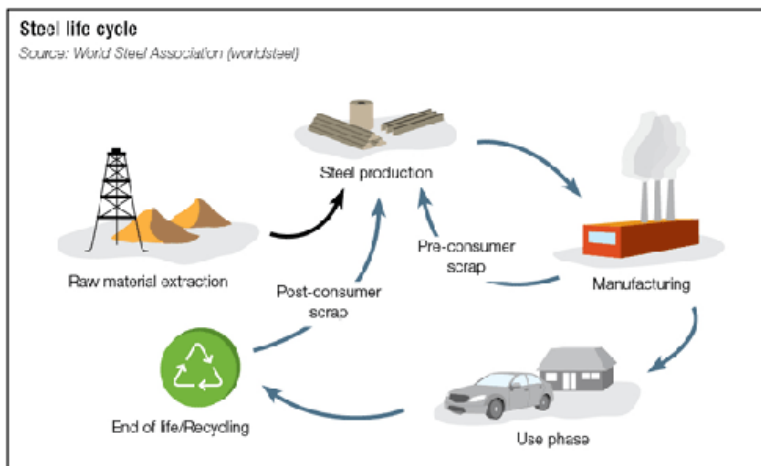
Metal roofing withstands the test of time better than most other roofing options. It has an average life expectancy of 60 years, which is double or triple that of a typical shingle roof! Durability is much of the reason metal roofing can outlast and outperform traditional roofing solutions. Many of our systems have exceptional wind uplift ratings and industry leading weather tightness. With the added perk of lower life-cycle costs, more and more homeowners are choosing metal; not only for its quality and durability, but because a metal roof is often times a “one-and-done” solution with much lower routine maintenance than other choices. When choosing metal, you can rest easy knowing that Metal Mart has you (and your home) covered, long-term, with high quality material!



Environmentally Friendly

Because steel is the most recycled material worldwide, metal roofing contains a high percentage of recycled materials. Your metal roof could have been a refrigerator or old automobile in its past life. When the service life of a metal roof ends (decades after installation), the material can be recycled again, often times earning a little extra money from the old material for the owner. While it can

be done, recycling shingles is much more difficult than recycling metal, so shingles typically end up in landfills. Many local landfills have more shingles than they care to accept and charge exorbitant fees to discard them. Every year, 11 million tons of shingles are removed from existing projects, and it takes 300 years for an asphalt shingle to decompose. If you're concerned with preserving the environment for future generations, metal roofing is the clear choice.

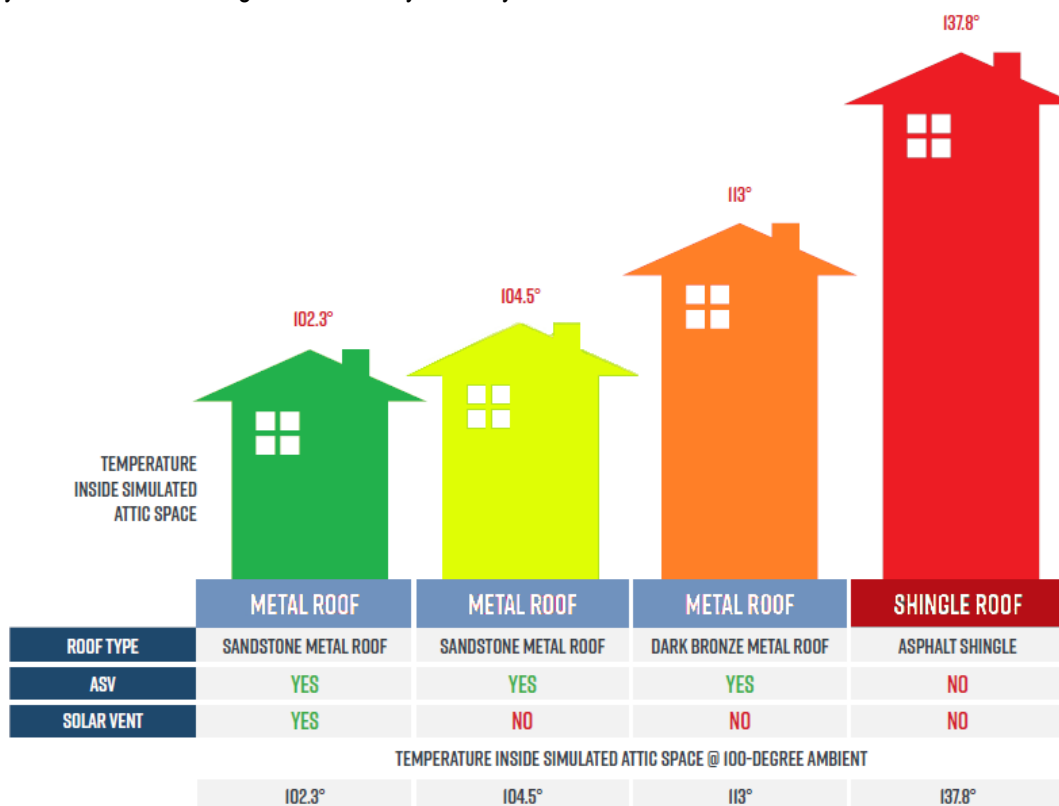
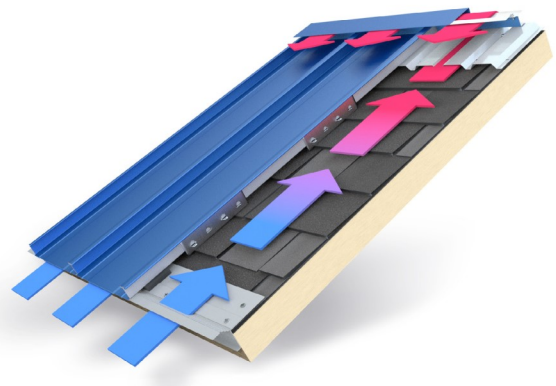


[CLICK HERE](#) to see the Recycled Content Statement from Metal Mart's Manufacturer, McElroy Metal



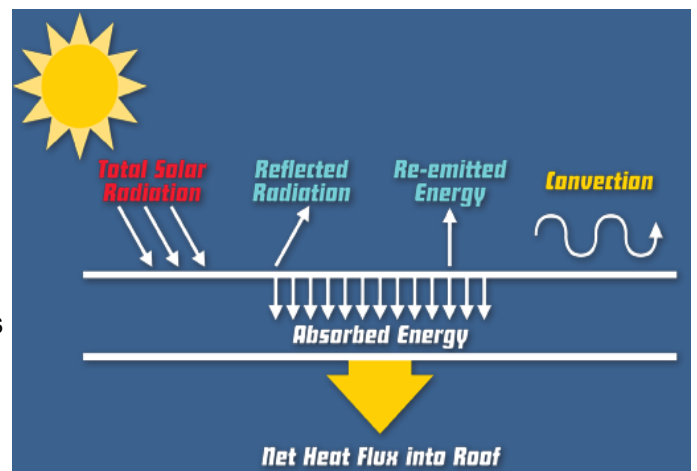
Energy Efficiency

In addition to being environmentally friendly, metal roofing can save you money on utility bills. According to the Department of Energy, 35% of energy costs for the average building is spent on heating, cooling and ventilation. Above-Sheathing Ventilation (ASV) is a great method to reduce these energy costs. ASV means adding an airspace between the metal roofing and the roofing substrate, which could be anything from a plywood deck to existing conventional shingles. The airspace enables the energy (hot air) to move and vent into the atmosphere, rather than get absorbed into the building structure. Without ASV, all that heat under your roof finds its way to your attic space and eventually the interior of your home. Maximizing ASV reduces your utility load.



To better understand the benefits of Above-Sheathing Ventilation (ASV), [check out this video](#) comparing attic temperatures of four distinct mockup systems exposed to the summer heat of Houston, Texas. The mockup with ventilated airspace and solar venting has an attic temperature of only a few degrees higher than ambient air compared to the standard shingle roof, which was almost 40 degrees higher. Therefore, adding above-sheathing ventilation when placing new metal over existing shingles is a wise decision.

A building's cooling and heating costs can also be effectively reduced by insulation under the roof surface. Adding increasing amounts of insulation is not always the best way to save energy. As part of a total system design, a Metal Mart cool metal roof can be an economical method for better energy efficiency. Metal Mart cool metal roofing comes standard with oven-baked paint finishes. This family of roofing can achieve solar reflectance of over 70% most of the time. Reflected solar energy allows the roof surface to remain cooler, which means less heat is transferred into the building. The infrared emittance of a roof is a measure of absorbed solar radiation that is remitted from the roof surface to the sky. Emittance of metal roofing varies with the surface finish. Emittance of painted metal roofing can be as high as 90%.



Insurance Approvals

Along with standard Class 4 Impact Ratings and high fire resistance on all of our metal roofing panes, we also offer 11 different panel systems with approvals from the Texas Department of Insurance, which translates directly into savings on your homeowners insurance premium. Homeowners have reported up to a 35% savings by switching from shingles to metal! Factor that in with the fact that metal roofing has a lower life cycle cost than other roofing choices, and the ability of a metal roof to exceed the life of a shingle roof by two or three times, and you can't afford to not upgrade to a metal roof! Metal Mart can even help you with a packet of information on your new metal roof system to submit to your insurance company when applying for discounts.



Stylish & Attractive

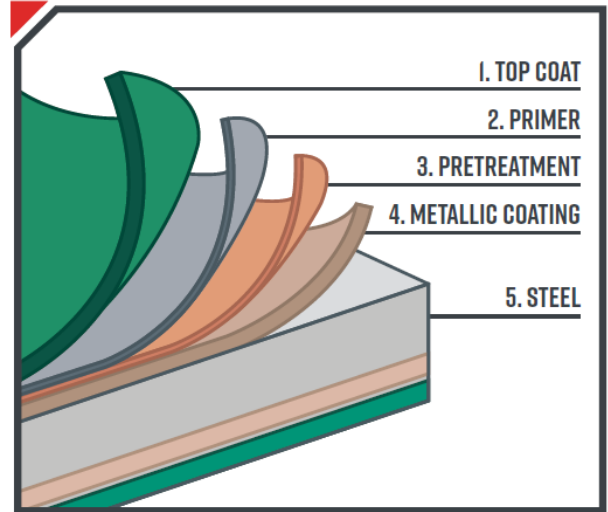
All across the country, homeowners are ditching their shingle roofs and upgrading to metal. While residential metal roofing isn't new, it is gaining in popularity because more homeowners are recognizing the many benefits that metal roofing has to offer. Even though beauty is in the eye of the beholder, with an industry leading selection of panel systems and 40 colors to choose from, most homeowners find a look they love at Metal Mart. With our Kynar 500 paint/coating system, a metal roof will continue to be as beautiful as the day it was purchased for years to come. Metal roofing can not only increase your home's aesthetics and curb appeal, but also your home's resale value by up to 6%. Upgrade your roof with quality, durability, and style by choosing metal !



What is a substrate?

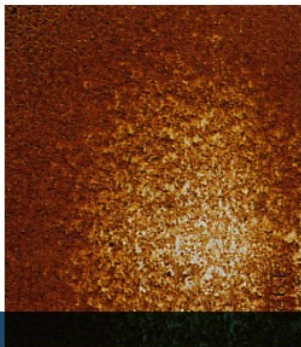
Underneath The Obvious

Consumers usually spend more time picking out the “color” for a metal roof than they do thinking about the substrate of the steel. The reality is that the substrate is essential to the life expectancy of metal roofing. Let’s dig a little deeper into the steel substrate topic. Depending on your needs, the type of substrate you choose is one of the most important items to consider. The most popular steel substrates in the metal roofing industry are Galvanized and Galvalume®. Galvanized substrates are coated in zinc, while Galvalume® substrates are coated with an alloy of zinc plus aluminum. Both Galvalume® and Galvanized are good substrates for metal roofing panels. With Galvanized substrates, the greater the amount of zinc, the greater the protection against panel corrosion.



Two commonly used Galvanized substrates are designated as G100 and G60. These designations relate to the total amount of zinc contained on both sides of the panel surfaces. G100 contains 1.0 ounce of zinc for every one square foot of panel, while G60 substrates contain 0.6 ounces of zinc. The important fact to consider is that a G100 substrate contains 66% more protective zinc than a G60 substrate. This difference will have a direct correlation to panel longevity and long-term aesthetics of your project. As a result, G60 substrates are simply not appropriate for residential roofing projects. Yet, they are widely available. For the uneducated consumer, it’s an easy mistake to make. For most applications, Galvalume® substrates offer the best long-term solution, and its superior performance has been proven in the field. Over four decades of testing have shown that Galvalume® delivers greater corrosion resistance compared to Galvanized panels. In fact, the performance of Galvalume® in the construction industry has been so superior that steel mills warranty it against rupture or perforation due to corrosion. Similar warranties simply do not exist for Galvanized substrates.

MODERATE MARINE
GALVANIZED G90

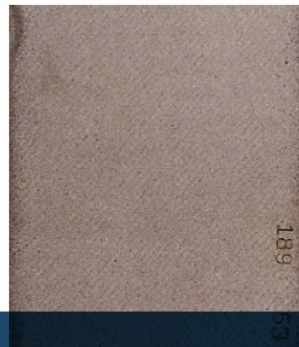


Galvanized (1 mil coating) G90 panels show complete red rust after 18 years at both marine and rural sites.

RURAL
GALVANIZED G90

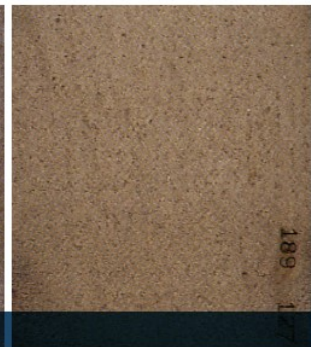


MODERATE MARINE
GALVALUME® SHEET



Galvalume® (1 mil coating) panels continue to perform well in the marine and rural sites after 23 years.

RURAL
GALVALUME® SHEET



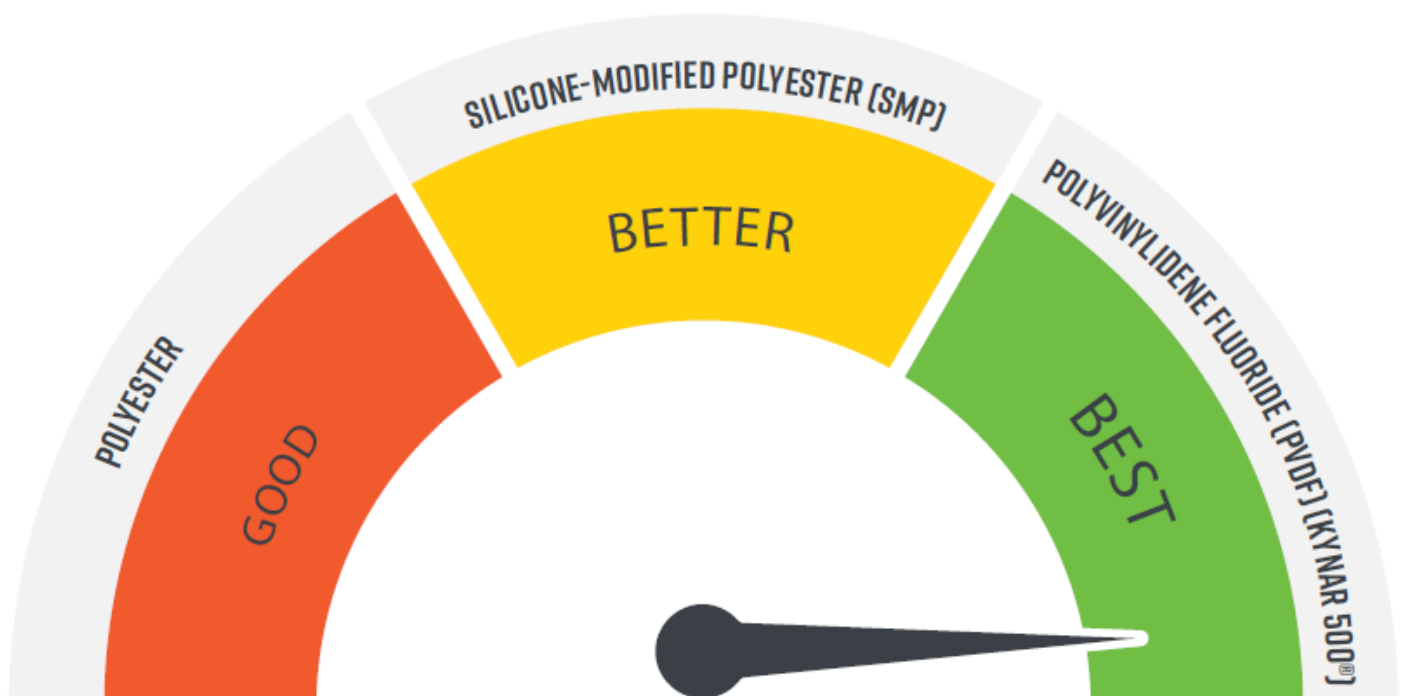
In one test, unpainted Galvalume® and Galvanized panels were placed in four different types of outdoor environments, including a normal marine and a rural setting. The harsher the surroundings, the better Galvalume® performed. After 23 years of side-by-side comparison in all areas, Galvalume® was two to four times more durable than Galvanized.

Color is important, but avoid the mistake many homeowners make when shopping for metal roofing. Make sure that the substrate matches your long-term performance expectations. There are a lot of options available in the marketplace, and the wrong substrate selection could result in disappointment and a shorter life expectancy for your new metal roof.

What is a coating?

Aside From The Obvious

The coating system, or paint, for metal roof panels is just as important as the substrate discussed in the last section. The coating/paint is not only the part of your new metal roof that everyone will see, but it's also a critical part of your overall metal roofing system. For the life of your metal roof (remember that can easily be 40 to 50 years), the coating will be exposed to Mother Nature's elements: ultraviolet sunrays, acid rain, dirt, etc. Over time, these environmental conditions can break down the coating, resulting in what is commonly referred to as panel fade and chalk. Fade and chalk are not pleasing to the eye, and the degree of fade and chalk is directly related to the coating system. The most popular coatings for metal panels are Polyester, Silicone-Modified Polyester (SMP) and Kynar 500® (PVDF). It's helpful to think of these three paint systems in a Good, Better, Best ranking system.

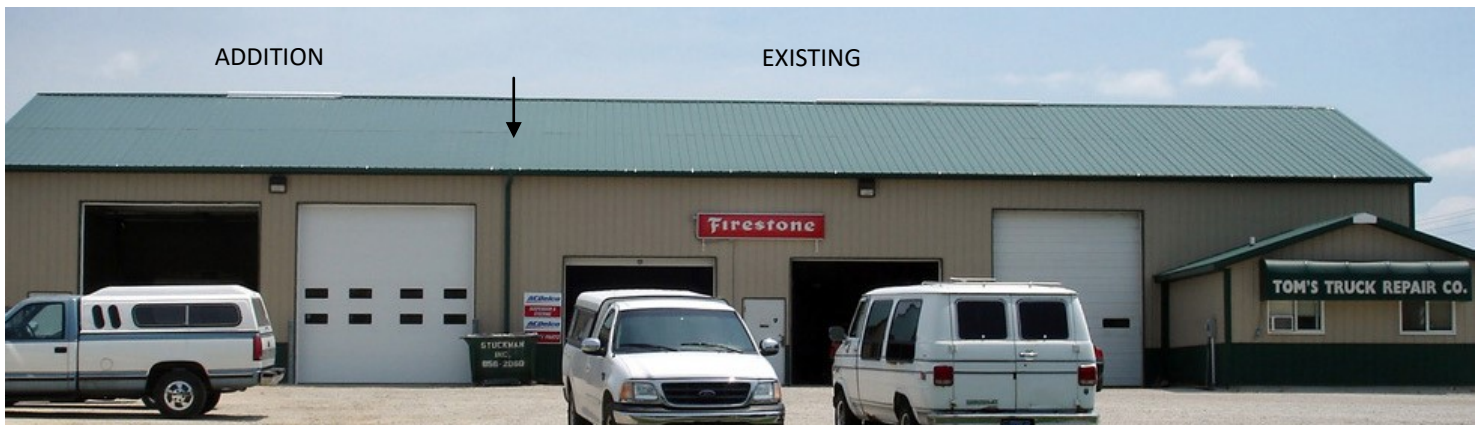


In that analogy, a Polyester paint system is the lowest with a “Good” ranking. However, Polyester paint systems exhibit the highest amount of chalk and fade, and they should not be selected for residential applications due to its short life expectancy. SMP (Silicone-Modified Polyesters) represent the “Better” option in our sliding scale. While they perform better than straight Polyesters, they will still exhibit considerable fade and chalk. For the less discerning homeowner or when light colors are selected, this “may” be a viable option because fade and chalk are less visible on lighter shades. PVDF’s (Kynar 500®) paint systems represent the best performance available for today’s metal panels, and consequently hold the “Best” position in the scale. Kynar 500® paint systems were developed in the 1960s and quickly became the go-to product for commercial and architectural applications. SMP systems were utilized more for agricultural and industrial applications where performance was not as important. In the late 1990s, Kynar 500® paint became the go-to product for all applications. It offers unmatched performance at a marginally higher price than SMPs.

Still not sure which coating is right for you? Let's look at some examples to help it make more sense. Both Kynar 500® (PVDF) and Silicone-Modified Polyester (SMP) panels were installed on a project in Louisiana. On day one, the colors were an identical shade of green. However, this project included a combination of materials, some with the Kynar 500® paint system and some with the SMP paint system. The photo below, taken only eight years later, tells a powerful story of the differences between the paint systems as it highlights both chalk and fade of the SMP paint system. Note that no fade or chalking on the darker Kynar 500® (PVDF) panels is present during the same eight-year window.



Although a commercial application, the next example also dramatically illustrates the superior performance of Kynar 500®. This building was built in two phases, nine years apart. Note that there is no color difference between the original roof and the addition.



With examples like these, it's obvious that Kynar 500® (PVDF) coatings are the "Best" option when long service life, color retention and chalk-resistance are important. Yet, uninformed homeowners still often select a Silicone-Modified Polyester paint system. Why? It's often because not every panel manufacturer or contractor offers Kynar 500® paint as one of their standard products. In those cases, installers may feel forced to sell the product they have available to them and oversell it as "just as good" as Kynar 500®. Plainly put, there is no paint system that is presently equal to or better than Kynar 500®.

Selecting Kynar 500® (PVDF) for your residential roof means a long-lasting "like new" appearance year-after-year versus Silicone-Modified Polyester (SMP) coatings, which can begin to degrade and look aged after only a few years. A metal roof is a big investment in your home. It's important to understand these different types of paint systems, make your selection, and then only work with contractors who are willing to supply the product you select.

In summary, if long-term performance and "like new" appearance are important criteria to you, metal roofs with a Galvalume® substrate and PVDF (Kynar 500®) are your best bet. Don't be afraid to ask potential contractors what substrate and coating they recommend for your project. It could be a red flag if they don't know or try to steer you toward lower-quality substrates and coatings.

As indicated previously, it's vitally important to consider the substrates and coating systems that you'll use on metal roofing for your home. When the proper products are selected, the warranty of the product is considerably less important (but still important). Surprised? Consumers often associate warranty with dependability and performance. This is not necessarily the case. Many suppliers in the roofing industry (both shingle and metal) have jumped on the practice of offering warranties to sway buyers. Lifetime warranties, while quite popular, simply don't guarantee acceptable performance for life.

Let's first take a look at shingle warranties. Have you ever seen a shingle last for a lifetime?

Of course not. However, major shingle manufacturers still offer lifetime warranties, even though everyone knows that a shingle won't perform for a "lifetime."

In fairness, there are some metal manufacturers who have taken the same approach. The theory is that buyers will see the big heading on a warranty with a number of years and never read the fine print. The reality is that many buyers don't take the time to fully understand warranties.

Just because a warranty has an extended time frame (45 years or even a "lifetime"), it doesn't necessarily mean that the warranty is better or that the product offers better performance. There are some "easy buttons" in life, but warranties simply aren't one of them. If you're going to factor warranty length into your purchase decision, you should ask for a copy of the warranty and actually read it!

When considering the warranties with metal panels, here are some of the highpoints you should watch for:

1. Length of Warranty Term

Be extremely careful with this one. There are many ways for manufacturers to manipulate this information. One of the most common approaches is to prorate the amount of coverage. While the big heading might say "Lifetime" or "45 Years," the fine print and exclusions might reveal that your product may only be warrantied at 20% value within just a few, short years.



2. Fade/Chalk Allowed

The summary table below was developed from prominent metal panel manufacturer warranties. It will help you understand what to watch for with regard to fade and chalk:



*National Coil Coaters Association (NCCA) image showing 5 delta e fade differential. Is this amount of fade acceptable for your home? If not, Kynar 500® coatings are the clear choice.

	SILICONE-MODIFIED POLYESTER (SMP)		KYNAR 500® (PDVF)	
	WARRANTY LENGTH	ALLOWED	WARRANTY LENGTH	ALLOWED
CHALK	30 YEARS	ROOF > 5	30 YEARS	ROOF > 8
FADE	30 YEARS	ROOF > 9	30 YEARS	ROOF > 5

Note: For chalk, higher numbers indicate better performance. For fade, lower numbers indicate better performance.

- ⇒ Note that the fade and chalk “Warranty Length” is the same for both SMP and Kynar 500®. That practice is actually quite common. If you aren’t paying close attention, this practice leads you to the conclusion that the SMP paint systems must be as good as the Kynar 500® because they both have a 30-year warranty. As we discussed earlier, that’s far from factual, so it’s important to dig a little deeper.
- ⇒ Chalk: When you look at the intersection of the “Chalk” and “Allowed” columns, things begin to make more sense. Keep in mind that in regard to Chalk, 10 is a perfect score of zero chalk, so a higher number is better. As you can see, SMP panels can exhibit 50% chalk on roof applications and still be within the warranty terms. When a Kynar 500® system falls below just 20% chalk for roofing, it would be considered a warrantable situation. Both are warranted for 30 years, but the Kynar 500® warranty is written to much higher standards and tighter requirements as one would expect with the superior paint finish.
- ⇒ Fade: Here’s where things really come into perspective. Keep in mind that for Fade measurements, a lower number is better. In this example, an SMP roof can experience up to 9 Delta E units of fade* before it’s in a warrantable situation. Conversely, Kynar 500® moves to a warranty situation once 5 delta e units of fade occur. Again, both warranty terms are 30 years, but the Kynar 500® paint offers almost twice the protection of the SMP warranty.
- ⇒ It’s also important to note that per ASTM (American Society for Testing and Materials) procedures, coating warranties specify that panel surfaces should be cleaned with cheese cloth and detergent before measurements are taken.

The harsh reality is that warranties (regardless of the industry) are often written to protect the manufacturer rather than the buyer. Consequently, we at Metal Mart believe that installed performance is a better measure of quality than warranties. As such, we encourage all of our customers and dealers to take warranties with a grain of salt. While they may certainly have a place in the decision-making process, they should never take center-stage for the reasons just discussed.

DON'T GET TRAPPED BY THE "WARRANTY" GAME.

Do not be blinded by long-life, fine-print warranties that promise far beyond the known performance of either panel or coating, or both. Remember, performance rather than warranty is a better gauge of quality and long-term customer satisfaction. Understand these warranty terms to protect yourself.



FADE Fading occurs when the environment attacks the pigment portion of the coating system. Per ASTM D-2244 Method A, procedures testing for fade occurs after all chalk and surface impurities have been removed using cheesecloth and detergent. The faded area, as shown in the image to the left, represents an acceptable level of failure for Silicone-Modified Polyester (SMP) coatings.



CHALK Chalking occurs when the environment attacks the resin in the coating system. As the resin degrades, it takes on a whitish appearance, called chalk. Shown is an acceptable level of failure for Silicone-Modified Polyester (SMP) coatings.



FILM INTEGRITY Film integrity is the ability of the coating to stay adhered to the metal substrate. Film integrity has little to do with fade and chalk ratings. Therefore, a bright red wall or roof can be a muted pink (or even chalk white), and the film will still be intact. This is an acceptable level of failure for Silicone-Modified Polyester (SMP) coatings.

RECOMMENDATIONS:

1. Read and understand your supplier's warranty.
2. Make purchasing decision based on panel performance, not warranty.
3. For long-term customer satisfaction, use the best combination of substrate and coatings.

Remedies, in the event of a warrantable claim, are another "fine print" area that deserves attention. Many manufacturers' liability is capped at the amount of money the homeowner paid for the material. That is correct, just the material. Other manufacturers have liability limits that include material and labor.

As you might guess, if the fade/chalk is "removed," it's rare for numbers to ever exceed the warranty levels. Remember this image? By terms of the warranty, the SMP coating on this project represents an acceptable level of failure. Any claim would be denied.



While the options may seem overwhelming at first, metal roofing systems are available in two basic types of systems:

Exposed Fastener and Concealed Fastener.

Exposed Fastener

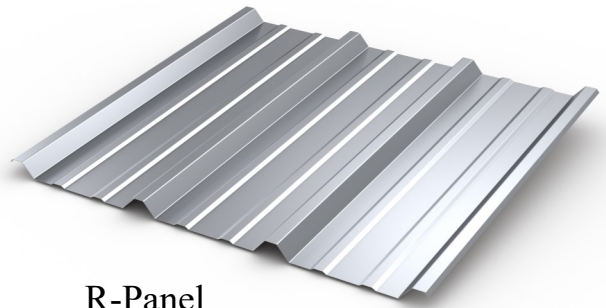
Exposed fastener panels are the most economical option, and they are typically installed over solid decking (or existing shingles for re-roof applications). They are attached with fasteners that penetrate through the metal panel into the structure below. Fasteners are available in the same color as the panel to make them visually less apparent.

Here are some examples of popular exposed fastener panels:



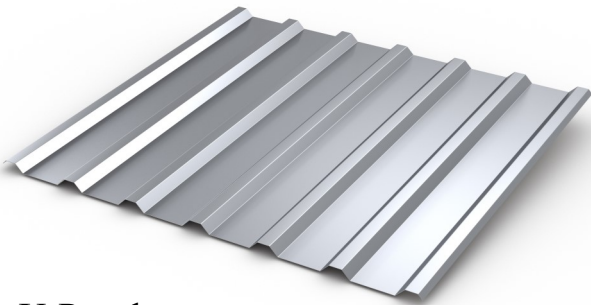
Max-Rib

Max-Rib is a 3' coverage low profile panel featuring a 3/4" rib height with 9" on center high ribs. Max-Rib has been a top choice for the budget conscious homeowner.



R-Panel

R-Panel is a 3' coverage multi-use panel featuring a 1 1/4" rib heights with 12" on center high ribs. R-Panel is a popular choice for homeowners in the Southwest.



U-Panel

U-Panel is a 3' coverage low profile panel featuring a 3/4" (approximate) rib height with 6" on center high ribs. U-Panel is a popular choice with homeowners looking for a softer appearance.



Multi-Cor

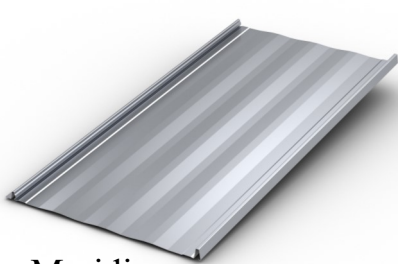
Multi-Cor is a 32" coverage corrugated panel featuring a 7/8" rib height. Multi-Cor is especially popular with homeowners wanting a rustic appearance.

Concealed Fastener

Concealed fastener panels are considered a step-up from exposed fastener panels, and they are traditionally more expensive. The higher cost stems from both panel manufacturing and increases in the cost of contractor labor. These types of panels cost more for manufacturers to produce, and they also require crating to ensure they arrive in great condition. Additionally, widths of 16" to 18" are common for this family of panels. This narrower width requires installers to handle twice as many panels as the exposed fastener panel options. However, the upside is that there are no exposed fasteners through the panel, which offers greater curb appeal and improved weather-durability.

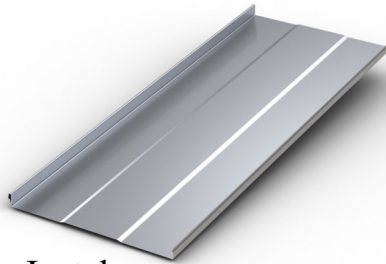
Concealed fastener panels are joined together by integral locking seams that are fastened to the deck with fasteners and/or clips hidden underneath the roofing panels. Concealed fastener panels can be installed via a snap-lock method or a mechanically seamed method depending on the system. Mechanically seamed panels require a specialty piece of equipment to fold the seams into place. Vertical seam panels with concealed fasteners are commonly referred to as Standing Seam Systems.

Here are some examples of popular concealed fastener panels:



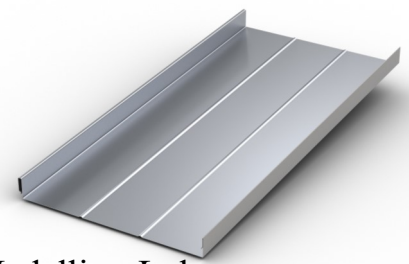
Meridian

Meridian is a .91" tall snap-lock panel. Meridian requires a solid deck, but features a clip-less attachment.



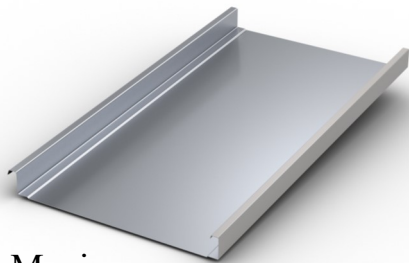
Instaloc

Instaloc is a 1" tall snap-lock panel. Instaloc requires a solid deck and clips.



Medallion-Lok

Medallion-Lok is a 1.75" tall snap-lock panel. Medallion-Lok requires clips but can be installed over a solid deck or open framing.



Maxima

Maxima is a 1.5", 2", or 3" tall mechanically seamed panel. Maxima requires clips but can be installed over a solid deck or open framing.



Seamers & Clips

Specialty equipment called mechanical seamers are used for panel systems like Maxima where the lap of the panel must be folded into place.

Clips are used in most concealed fastener metal roofing systems for attaching the panel to the underlying decking.



Maybe you still aren't convinced to make the switch to a superior, low-maintenance product like a metal roof. While you may be just beginning to consider metal roofing for your home, it's certainly not a new product. In fact, metal roofing has been around for hundreds of years, but the application has been more common in commercial construction. For homeowners, the common myths of metal roofing often prevent them upgrading to metal. Let's debunk some of the most common misconceptions so you can make an informed decision with a truly open mind.

Metal Roofing is Noisy When It Rains.



If you've ever been in a pole building or garage with a metal roof that didn't have a plywood deck and insulation under it, you likely experienced for yourself why this myth is so prevalent. Without a roof deck, insulation and underlayment, the metal panels can actually intensify the sound and make a light sprinkle sound like a downpour!

It's important to understand that the sound of rain is deadened by the layers of building materials between the metal roof and the living area. The insulation, drywall and wood decking all play a role in deadening the sound of rain. With these building components in place, noise levels are similar to what could be expected with any other roofing material, including shingles.

Check out [this video](#) if you are still unsure.

Conclusion: FICTION

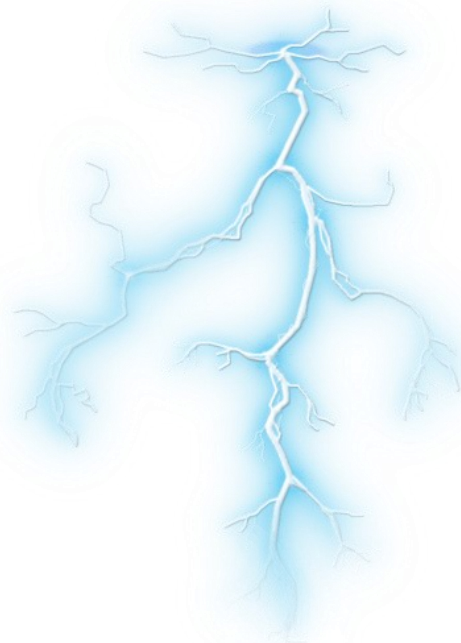
Metal Roofing will Attract Lightning Strikes.

Many people think that because metal can conduct electricity, lightning will actually be attracted to it. Instead, lightning actually strikes the closest targets. That's why taller buildings and trees are at the greatest risk for a lightning strike. It's also why the Empire State Building is struck by lightning an average of 25 times each year.

Not only is a metal roof no more prone to lightning strikes than any other roofing material, you can take comfort in the fact that metal roofing is non-combustible. In the event there is a lightning strike, a metal roof will not catch fire as other building materials do.

Check out [this link](#) if you are still unsure.

Conclusion: FICTION

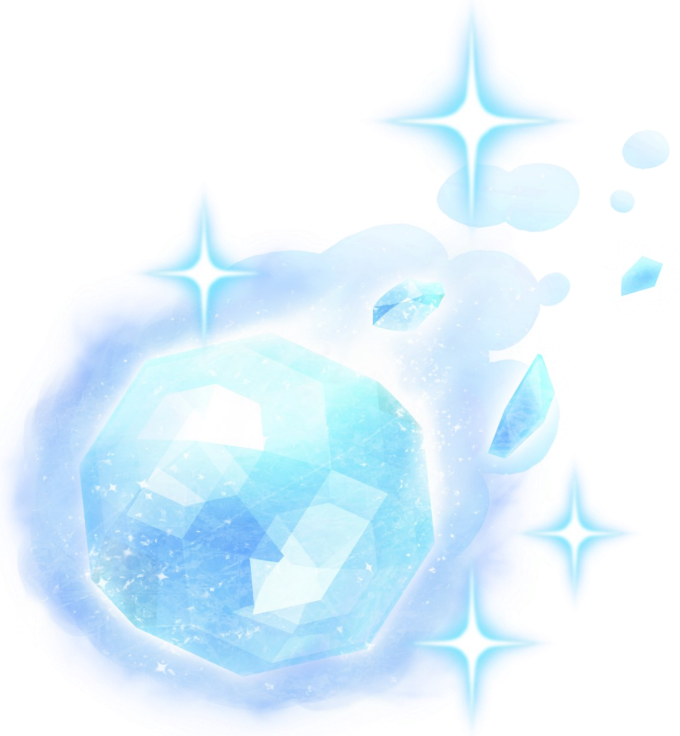


Metal Roofing is Prone to Hail Damage.

Admittedly, hail is the single biggest cause of residential roof replacement, and we all pay the price for it with higher home insurance premiums. However, you do have some control. Because metal roofing is more hail-resistant than shingles, many insurance companies actually offer a discount on home insurance when metal roofing is used.

An article from the Metal Roofing Alliance addresses the durability of metal roofs as follows: "In studies conducted by the Insurance Institute for Business & Home Safety (IBHS), while all roof types can sustain some cosmetic damage depending on hail-storm severity, metal roofing performed best and was much less likely to puncture as compared to asphalt, withstanding even golf ball-sized hail stones without compromising performance."

Conclusion: FICTION



Metal Roofing is Too Expensive.

While it's never good to generalize, it's fairly safe to say that metal roofing is often more expensive at the time of purchase. With that said, savvy homeowners are starting to realize there's more at stake than just the initial purchase price. With a life expectancy two to three times greater than shingles, a metal roof can actually cost "less" money over time. Additionally, metal roofs generally require less maintenance than shingle roofs, which are more susceptible to wind, curling and hail damage. In addition, homeowners can see savings on homeowners insurance premiums and utility bills, which is a win in the affordability column for metal.

Conclusion: TIE - It depends if you're comparing "first" cost or "final" cost. Metal roofing is often more expensive initially, but it's typically a less expensive option long-term.



Are you curious about what it would cost to upgrade your roof to metal? Fill out the Metal Mart Roofing Quote Request Form on the next page and drop it off at your local Metal Mart store for a free, no obligation materials quote!

Metal Roofing Quote Request Form

Please complete form and return to your local Metal Mart with roof measurements.

Name: _____ Phone: _____

Email: _____ Preferred Contact Method: Call Email

Panel System: _____ Color: _____

Gauge*: 24ga 26ga (Standard) 29ga *Please note: Panel gauge can be limited by color, always check availability.

Standing Seam Pan Condition (Not all pan conditions available on all panels, check availability):

Minor Ribs Striations Pencil Ribs Flat



Application: Solid Wood Decking Open Framing (Purlins) Other: _____

Additions (check all that apply): Vented Ridge Underlayment Specialty Screws Insurance Packet Warranty

Roof Measurement Checklist (See Roofing Terminology Sheet for Clarification):

- Each Side of the Roof / Eaves and Rakes / Entire Perimeter
- All Ridge Lines and/or Hip Ridges – Roof Peaks
- Distance from each Eave to Parallel Ridge Line (Sheet Lengths)
- Dormer/Extension Perimeter – Valleys, Eaves, Rakes, Ridges
- Dormer/Extension Placement and Relative Measurements to Eaves, Rakes, and Ridges
- Pitch of Main Roof and Each Dormer, Extension, and/or Additions
- Soffits Length, Width, Panel Choice (if included)
- Gutter and Downspout Placement and Height (if included)
- Roof Penetrations: Placement and Dimensions (Vents, Pipes, Chimney)
- Any Special Trim or Custom Orders (ie Peak Box, Chimney, Crickets, etc.)

Notes: _____

Please include a drawing or plans of your roof with all measurements labeled for accurate quoting.

Legal Stuff: This form is intended for quoting purposes only. Because each roof is unique, accurate measurements are required for accurate quotes. It is the customer's responsibility to check the accuracy of all roofing quotes before placing an order with Metal Mart. Metal Mart is not liable for miss-calculated, miss-measured, or miss-ordered material. Price quotes are for included material only. Additional material can be ordered at the customer's expense. Metal Mart does not install, quote is for material only. To get the best quality and life expectancy, it is recommended that you hire an experienced metal roofing contractor for roofing measurements and installation. Always check references before hiring a contractor.

The Metal Mart Difference

A Step Above

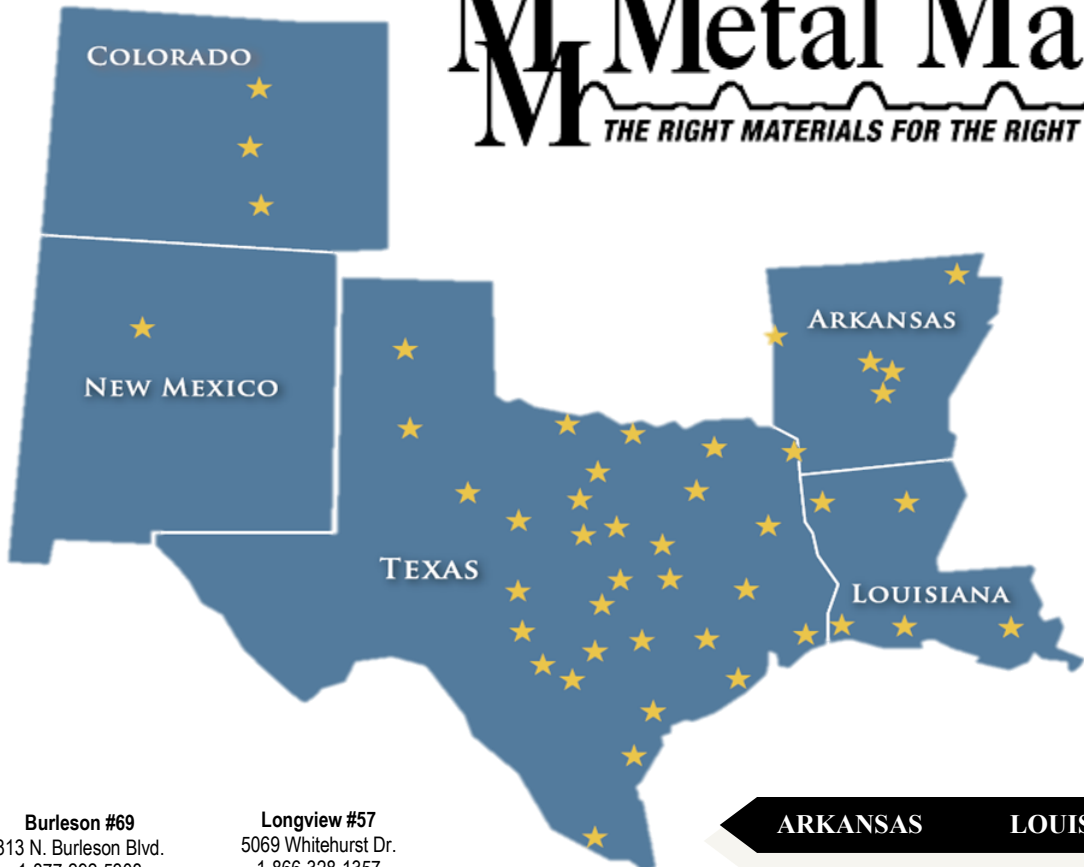
Our Metal Mart stores pride themselves on exceptional customer service. At Metal Mart you are family; not just another dollar in the till. Our team members “speak metal”; we understand your wants and needs, and can help with your journey from a metal novice to a well informed metal roof owner. We offer the widest variety of metal roofing components of any retailer in the country. Not only can we supply your roof panels, but we can also help with all the accessories and tools needed to install metal roofing the right way. We have ample resources to answer all your questions from contractor recommendations to technical installation details. All of our material comes standard with industry leading packaging to protect your purchase from the moment it leaves the state-of-the-art production lines. Even if you forgot about a difficult area or your roof and you need a last minute custom piece of flashing, all Metal Mart locations fabricate trim in-house with exceptionally fast turn-around times. Our growth and established base of life-long customers is truly a testament to our quality products, affordable pricing, and excellent customer service.



*We appreciate the opportunity
to earn your business and we
look forward to you joining the
Metal Mart family!*

M Metal Mart

THE RIGHT MATERIALS FOR THE RIGHT PRICE!



COLORADO

Colorado Springs #61
740 Hathaway Dr.
1-866-613-1747
719-574-9130

Commerce City #67
6475 E. 56th Ave.
1-877-820-4854
303-288-4677

Pueblo West #54
66 N Dynamics Dr. Suite 130
1-866-705-4591
719-547-7170

NEW MEXICO

Albuquerque #34
505 Menaul Blvd. NW
1-800-825-3634
505-243-1161

TEXAS

Alvin #68
3539 N Hwy 35 Bypass
1-855-477-6274
281-824-8109

Amarillo #19
10280 I-27*
1-800-677-2519
806-622-2230

Athens #38
9389 State Hwy. 31 West
1-800-323-0231
903-677-0555

Bellmead #40
1518 A I-35
1-888-524-0335
254-412-0335

Belton #59
5005 West Hwy. 190
1-866-451-5144
254-933-2500

Boerne #55
39336 IH 10 West
1-866-883-4742
830-249-4711

Bryan #08
6947 E St Hwy 21
1-800-677-2508
979-778-1734

Buda #01
17801 I-35
1-800-677-2501
512-295-2076

Burleson #69
813 N. Burleson Blvd.
1-877-292-5308
817-447-2728

Burnet #47
3501 East Hwy 29
1-800-301-2615
512-756-4433

Caddo Mills #46
3354 I-30 W.
1-866-284-5790
903-527-5159

Clyde #02
1317 S I-20 Access Rd.
1-800-677-2502
325-893-4224

Conroe #15
2309 North 1st Street
1-800-677-2615
936-760-3144

Fairfield #71
440 W I-45
1-888-509-5383
903-389-2764

Gainesville #14
3600 W. Hwy. 82
1-800-677-2514
940-665-8158

Hooks #58
251 Shiloh Rd.
1-866-428-0646
903-223-6660

Longview #57
5069 Whitehurst Dr.
1-866-328-1357
903-553-1991

Lubbock #10
4309 Idalou Rd.
1-800-677-2710
806-747-9016

Lufkin #17
4118 South US Hwy 69
1-800-677-2517
936-824-2004

Mathis #32
10662 I-37 Access Rd.
1-800-677-0632
361-547-7766

McAllen #66
4309 W Business 83
1-855-813-9388
956-688-6900

Merkel #70
9710 IH-20
1-844-725-2498
325-928-1113

Ponder #65
17771 Hwy 380 West
1-877-861-9951
940-482-0047

Reno #25
6185 B Lamar Rd.
1-800-677-2925
903-784-5189

Schertz #16
12737 IH-10 East
1-800-677-2516
210-658-6043

Taylor #72
500 Carlos G. Parker SE
512-352-6310

Victoria #28
16502 NW Zac Lentz Parkway
1-800-677-2428
361-578-6181

Vidor #13
24146 IH-10
1-800-677-2513
409-769-0630

Waxahachie #03
7200 North IH-35 E
1-800-677-2503
972-576-0606

Weatherford #04
2100 Burton St. #B
1-800-677-2504
817-599-4186

Wichita Falls #31
7882 Seymour Hwy.
1-800-677-2598
940-696-9671

ARKANSAS

Fort Smith #41
7320 US 271 South
1-800-497-7129
479-648-3342

Jonesboro #48
5517 Highway 1 South
1-800-950-6102
870-930-9007

Little Rock #63
7420 Enmar Drive
1-877-895-5883
501-562-3112

Mayflower #06
678 AR 365 South
1-800-677-2506
501-470-3130

Pine Bluff #62
4400 US 65
1-800-824-7170
870-536-0161

LOUISIANA

Bossier City #73
4401 E. Texas St. Suite 400
888-883-7801
318-459-7828

Carencro #35
4401 NW Evangeline
1-800-677-7535
337-886-7944

Gonzales #49
1820 West Hwy. 30
1-888-207-1950
225-647-8588

Lake Charles #42
124 1/2 Bunker Rd.
1-800-287-0367
337-437-7100

Monroe #53
5930 Frontage Road
1-866-845-0830
318-343-3900

*45 Locations to
Serve All Your
Metal Roofing Needs*